



Size 3



950mm
(max door width)

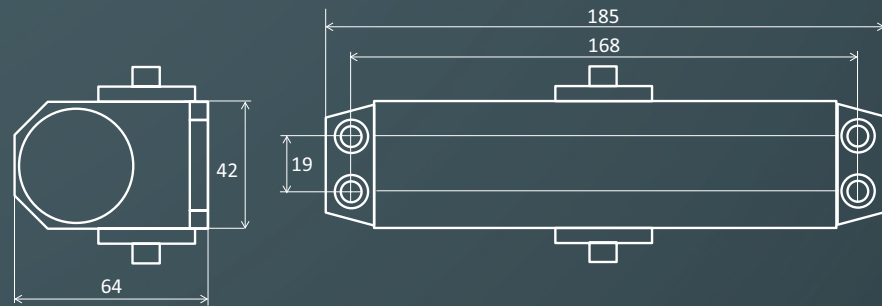
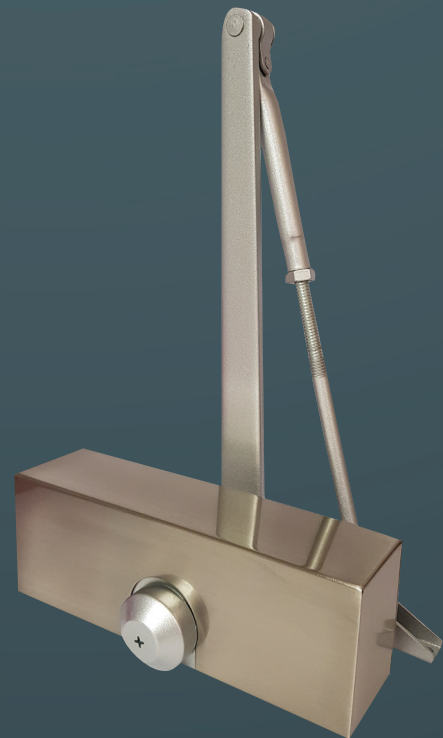


60kg
(max door weight)



10 Years

TS1.224 - Fixed Power Size 3 Budget Door Closer c/w Cover



Product Overview:

Our entry level budget door closer with full square cover, suitable for light/medium duty general applications including student accommodation, flat entrance doors etc.

Testing & Standards

- CE marked against EN1154
- Included in successful fire test to EN1634
- Suitable for use on timber fire doors of up to 120 minutes fire resistance
- Safe in use
- High corrosion resistance

Specification		TS1.224
Closing force (Fig 1)	EN size	3
Door size (max)	Width (mm)	950
	Weight (kg)	60
Door size (min)	Width (mm)	240
Body dimensions	Length (mm)	185
	Height (mm)	42
	Depth (mm)	64
Application	Pull side fig 1	✓
	Push side fig 66	✓*
	Transom fig 61	✓*
Mechanism	Rack & pinion	✓
Angle of opening		180°
Non handed		✓
Adjustable sweep speed		✓
Adjustable latch speed		✓

* these options are not covered by CE

Cover options	TS1.224
Square	✓

Finish options	TS1.224
Cover & silver sissor arm	SIL ✓
	SSS ✓
	PB ✓

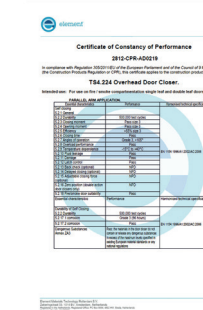
Tested to EN1154	TS1.224
------------------	---------

4 8 3 1 1 3 - fig.1
3 8 3 1 1 3 - fig.66

CE certificate



UKCA certificate



Certifire certificate



Finishes



Cover



Square cover
L:190 x H:67 x D:48mm